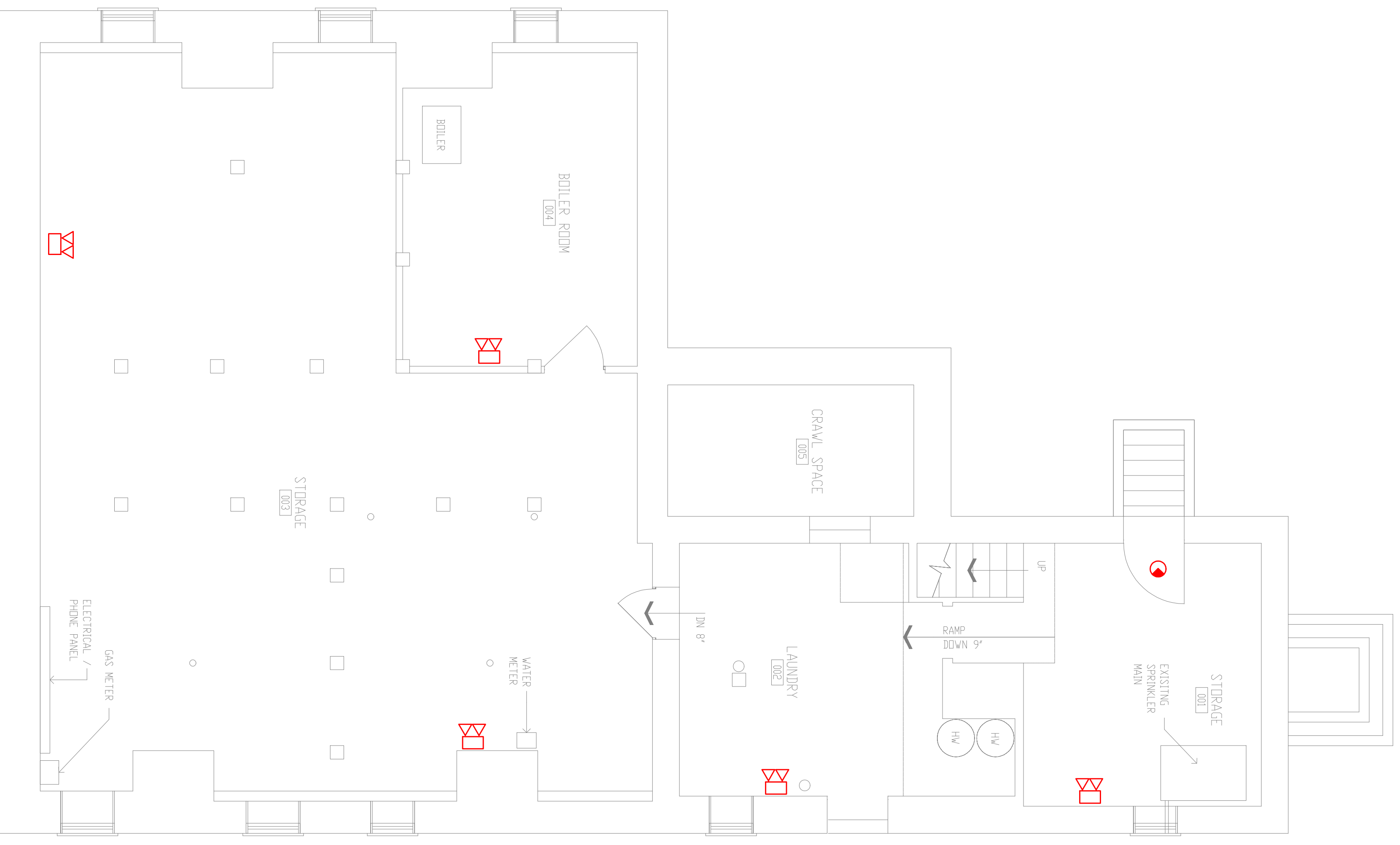
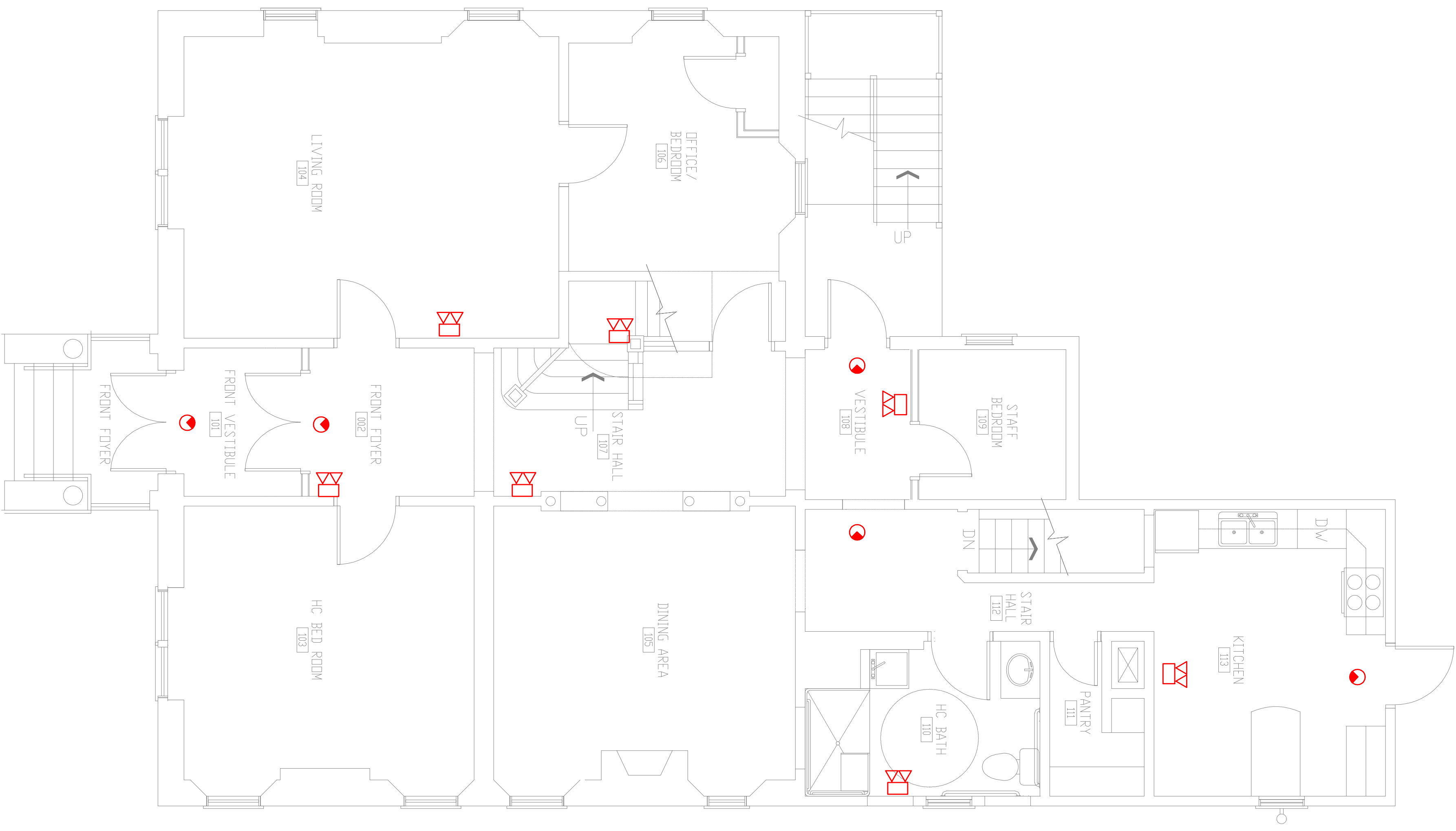


LEGEND



BASEMENT PLAN



FIRST FLOOR PLAN

CONTRACTOR:
JM COULL, INC.
 20 POWDER MILL ROAD
 MAYNARD MA
 978-461-0330

REV.# DESCRIPTION DATE
CUMMINGS ENGINEERING
 323 ANDOVER STREET
 WILMINGTON, MA 01887
 (978) 658-2816

ENGINEER:
 RICHARD D. CUMMINGS, P.E.
 CUMMINGS ENGINEERING
 323 ANDOVER STREET
 WILMINGTON, MA 01887
 SCALE: 1/4" = 1'-0"
 DRAWN: *ms*
 DATE: FEBRUARY 08, 2010



PROJECT:
COMMUNITY TEAMWORK
 360 PAWTUCKET ST.
 LOWELL, MA

DRAWING TITLE:
**EMERGENCY LIGHTING
 DESIGN LAYOUT**

DRAWING #
E5